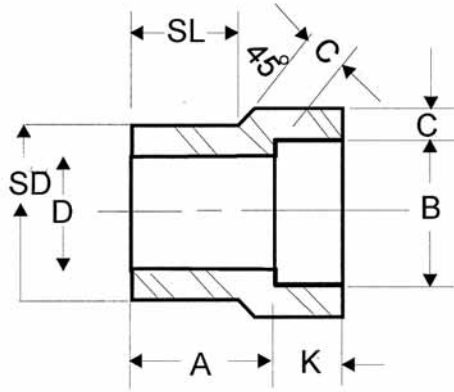
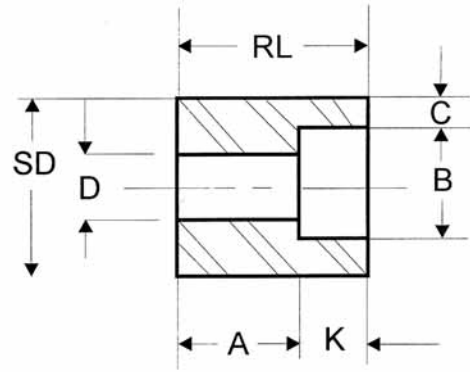


PASLANMAZ SOKET KAYNAKLI REDÜKSİYON PARÇASI

Stainless Steel Reducer Inserts Socket - Welding Class 3000 Lb. (3M) - 6000 Lb. (6M)



TYPE 1



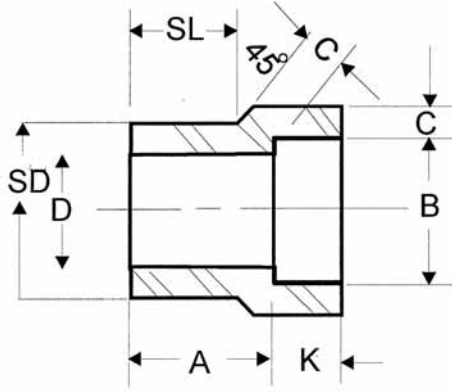
TYPE 2

Dimensions in Millimeters

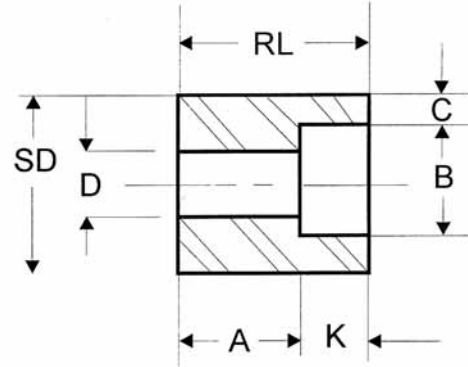
Anma Çapı Nom. Size	TIP		Socket		Boru Dış Çapı Dia SD	Boy Length A		İç Çap Bore D		Duvar Kalınlığı Wall Min. C		Boy / Length			
	Type (2) D		Dia B	Depth Min. K		3M	6M	3M	6M	3M	6M	SL		RL (Min.)	
	3M	6M			3M							6M	3M	6M	
3/8 x 1/4	1	1	14.35	10	17.15	19	21	9.0	6.5	3.78	4.60	14	16		
1/2 x 3/8	1	1	17.78	10	21.34	21	23	12.5	9.0	4.01	5.03	16	16		
1/2 x 1/4	1	1	14.35	10	21.34	21	21	9.0	6.5	3.78	4.60	16	16		
3/4 x 1/2	1	1	21.97	10	26.67	22	25	16.0	11.5	4.67	5.97	17	19		
3/4 x 3/8	2	1	17.78	10	26.67	16	22	12.5	9.0	4.01	5.03		19	27	
3/4 x 1/4	2	2	14.35	10	26.67	18	22	9.0	6.5	3.78	4.60			27	32
1 x 3/4	1	1	27.31	13	33.40	24	28	21.0	15.5	4.90	6.96	19	21		
1 x 1/2	2	1	21.97	10	33.40	16	28	16.0	11.5	4.67	5.97		21	28	
1 x 3/8	2	2	17.78	10	33.40	18	22	12.5	9.0	4.01	5.03			28	33
1 x 1/4	2	2	14.35	10	33.40	19	24	9.0	6.5	3.78	4.60			28	33
1-1/4 x 1	1	1	34.04	13	42.16	25	30	26.5	20.5	5.69	7.92	21	22		
1-1/4 x 3/4	2	2	27.31	13	42.16	18	21	21.0	15.5	4.90	6.96			32	35
1-1/4 x 1/2	2	2	21.97	10	42.16	19	22	16.0	11.5	4.67	5.67			32	35
1-1/4 x 3/8	2	2	17.78	10	42.16	21	24	12.5	9.0	4.01	5.03			32	35
1-1/4 x 1/4	2	2	14.35	10	42.16	22	25	9.0	6.5	3.78	4.60			32	35
1-1/2 x 1-1/4	1	1	42.80	13	48.26	28	35	35.0	29.5	6.07	7.92	22	25		
1-1/2 x 1	2	1	34.04	13	48.26	18	29	26.5	20.5	5.69	7.92		25	33	
1-1/2 x 3/4	2	2	27.31	13	48.26	19	25	21.0	15.5	4.90	6.96			33	40
1-1/2 x 1/2	2	2	21.97	10	48.26	21	27	16.0	11.5	4.67	5.97			33	40
1-1/2 x 3/8	2	2	17.78	10	48.26	22	28	12.5	9.0	4.01	5.03			33	40
2 x 1-1/2	1	1	48.90	13	60.32	32	39	41.0	34.0	6.35	8.9	25	28		
2 x 1-1/4	2	2	42.80	13	60.32	21	24	35.0	29.5	6.07	7.92			38	41
2 x 1	2	2	34.04	13	60.32	22	25	26.5	21.0	5.69	7.92			38	41
2 x 3/4	2	2	27.31	13	60.32	24	27	21.0	15.5	4.90	6.96			38	41
2 x 1/2	2	2	21.97	10	60.32	25	28	16.0	11.5	4.67	5.97			38	41

PASLANMAZ SOKET KAYNAKLI REDÜKSİYON PARÇASI

Stainless Steel Reducer Inserts Socket - Welding Class 3000 Lb. (3M) - 6000 Lb. (6M)



TYPE 1



TYPE 2

Dimensions in Millimeters

Anma Çapı Nom. Size	TİP		Socket / Socket		Boru Dış Çapı Dia SD	Boy Length A		İç Çap Bore D		Duvar Kalınlığı Wall Min. C		Boy / Length			
	Type (2) D		Dia B	Depth Min K		3M	6M	3M	6M	3M	6M	SL		RL (Min.)	
	3M	6M			3M							6M	3M	6M	3M
2-1/2 x 2	1	1	61.37	16	73.02	46	43	52.5	43.0	6.93	10.92	38	32		
2-1/2 x 1-1/2	2	2	48.90	13	73.02	35		41.0		6.35				54	
2-1/2 x 1-1/4	2	2	42.80	13	73.02	37		35.0		6.07				54	
2-1/2 x 1	2	2	34.04	13	73.02	38		26.5		5.69				54	
2-1/2 x 3/4	2	2	27.31	13	73.02	40		21.0		4.90				54	
3 x 2-1/2	1		74.07	16	88.90	38		62.5		8.76		32			
3 x 2	2		61.37	16	88.90	25		52.5		6.93				48	
3 x 1-1/2	2		48.90	13	88.90	29		41.0		6.35				48	
3 x 1-1/4	2		42.80	13	88.90	30		35.0		6.07				48	
3 x 1	2		34.04	13	88.90	32		26.5		5.69				48	
4 x 3	2		90.04	16	114.30	33		78.0		9.5				60	
4 x 2-1/2	2		74.07	16	114.30	38		62.5		8.76				60	
4 x 2	2		61.37	16	114.30	38		52.5		6.93				60	
4 x 1-1/2	2		48.90	13	114.30	42		41.0		6.35				60	
4 x 1-1/4	2		42.80	13	114.30	43		35.0		6.07				60	

Length A - Sizes 3/8" thru 3/4" ± 1,5mm / - 0,0mm
 Sizes 1" thru 2" ± 2,0mm / - 0,0mm
 Sizes 2 1/2" thru 4" ± 2,5mm / - 0,0mm
 Length B - Sizes 1/4" thru 2" ± 0,25mm
 Sizes 2 1/2" thru 3" ± 0,4mm / - 0,25mm

Bore D - Sizes 1/4" thru 2" ± 0,8mm
 Sizes 2-1/2" thru 3" ± 1,5mm
 Dia SD - Sizes 3/8" thru 1-1/2" ± 0,25mm
 Sizes 2" thru 3" ± 0,50mm
 Sizes 4" ± 0,75mm
 Lg.SL - Sizes 3/8" thru 3/4" ± 0,0mm / - 1,5mm
 Sizes 1" thru 2" ± 0,0mm / - 2,0mm
 Sizes 2-1/2" thru 4" ± 0,0mm / - 2,5mm