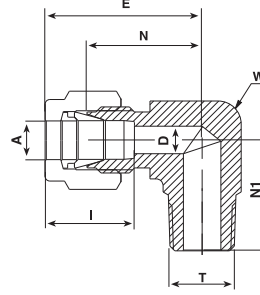


LET-LOK® TÜP FİTTİNGLERİ

LET-LOK® TUBE FITTINGS

769 L ERKEK DİRSEK (Konik Diş NPT)

769 L MALE ELBOW



TUBE (METRIC) MALE NPT THREAD

	A	T	D	W		N	E	N1	I
	Tüp O.D.	(NPT)		Wrench Flat					
	mm	in	mm	in	mm	mm	mm	mm	mm
769L _ 3 X 1/8	3	1/8	2,4	7/16	11,1	17,0	23,6	17,8	12,9
769L _ 3 X 1/4	3	1/4	2,4	1/2	12,7	18,0	24,6	23,4	12,9
769L _ 4 X 1/8	4	1/8	2,4	1/2	12,7	18,8	25,4	18,8	13,7
769L _ 4 X 1/4	4	1/4	2,4	1/2	12,7	18,8	25,4	23,4	13,7
769L _ 6 X 1/8	6	1/8	4,8	1/2	12,7	19,6	27,0	18,8	15,3
769L _ 6 X 1/4	6	1/4	4,8	1/2	12,7	19,6	27,0	23,4	15,3
769L _ 6 X 3/8	6	3/8	4,8	11/16	17,5	22,4	29,8	26,2	15,3
769L _ 6 X 1/2	6	1/2	4,8	13/16	20,6	24,4	31,8	33,0	15,3
769L _ 8 X 1/8	8	1/8	4,8	9/16	14,3	21,3	28,8	19,8	16,2
769L _ 8 X 1/4	8	1/4	6,4	9/16	14,3	21,3	28,8	24,4	16,2
769L _ 8 X 3/8	8	3/8	6,4	11/16	17,5	23,1	30,6	26,2	16,2
769L _ 8 X 1/2	8	1/2	6,4	13/16	20,6	25,1	32,6	33,0	16,2
769L _ 10 X 1/8	10	1/8	4,8	11/16	17,5	23,9	31,5	21,6	17,2
769L _ 10 X 1/4	10	1/4	7,1	11/16	17,5	23,9	31,5	26,2	17,2
769L _ 10 X 3/8	10	3/8	7,9	11/16	17,5	23,9	31,5	26,2	17,2
769L _ 10 X 1/2	10	1/2	7,9	13/16	20,6	25,9	33,5	33,0	17,2
769L _ 12 X 1/8	12	1/8	4,8	13/16	20,6	25,9	36,0	23,6	22,8
769L _ 12 X 1/4	12	1/4	7,1	13/16	20,6	25,9	36,0	28,2	22,8
769L _ 12 X 3/8	12	3/8	9,5	13/16	20,6	25,9	36,0	28,2	22,8
769L _ 12 X 1/2	12	1/2	9,5	13/16	20,6	25,9	36,0	33,0	22,8
769L _ 12 X 3/4	12	3/4	9,5	1 1/8	28,6	29,7	39,8	36,8	22,8
769L _ 15 X 1/2	15	1/2	11,9	15/16	23,8	27,9	38,0	35,1	24,4
769L _ 16 X 3/8	16	3/8	9,5	15/16	23,8	27,9	38,0	30,2	24,4
769L _ 16 X 1/2	16	1/2	11,9	15/16	23,8	27,9	38,0	35,1	24,4
769L _ 16 X 3/4	16	3/4	12,7	1 1/8	28,6	29,7	39,8	36,8	24,4
769L _ 18 X 1/2	18	1/2	11,9	1 1/8	28,6	29,7	39,8	36,8	24,4
769L _ 18 X 3/4	18	3/4	15,1	1 1/8	28,6	29,7	39,8	36,8	24,4
769L _ 20 X 1/2	20	1/2	11,9	1 3/8	34,9	34,5	44,6	41,7	26,0
769L _ 20 X 3/4	20	3/4	15,9	1 3/8	34,9	34,5	44,6	41,7	26,0
769L _ 22 X 3/4	22	3/4	15,9	1 3/8	34,9	34,5	44,6	41,7	26,0
769L _ 22 X 1	22	1	18,3	1 3/8	34,9	34,5	44,6	46,5	26,0
769L _ 25 X 3/4	25	3/4	15,9	1 3/8	34,9	36,8	49,1	41,7	31,3
769L _ 25 X 1	25	1	21,8	1 3/8	34,9	36,8	49,1	46,5	31,3

● "D" - Minimum çap uzunluğunu gösterir. ● Boyutlar sadece bilgilendirme içindir, önceden haber vermeden değiştirilebilir.

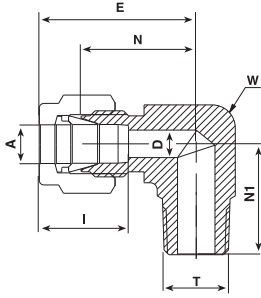
İç ölçüleri için bir sonraki sayfaya bakınız.

769 L ERKEK DİRSEK
(Konik Diş NPT)

(Devamı)

769 L MALE ELBOW

(Cont'd)



TUBE (INCH) MALE NPT THREAD

Sipariş için Malzeme tanımı	A Tüp O.D.		T (NPT)	D		W Wrench Flat		N		E		N1		I	
	in	mm		in	mm	in	mm	in	mm	in	mm	in	mm	in	mm
769L _ 1/16 X 1/16	1/16	1.58	1/16	.05	1.27	7/16	11.1	.06	15.24	.75	19.05	.70	17.78	.34	8.6
769L _ 1/16 X 1/8	1/16	1.58	1/8	.05	1.27	7/16	11.1	.06	15.24	.75	19.05	.70	17.78	.34	8.6
769L _ 1/8 X 1/16	1/8	3.17	1/16	.09	2.28	7/16	11.1	.67	17.02	.93	23.62	.70	17.78	.50	12.7
769L _ 1/8 X 1/8	1/8	3.17	1/8	.09	2.28	7/16	11.1	.67	17.02	.93	23.62	.70	17.78	.50	12.7
769L _ 1/8 X 1/4	1/8	3.17	1/4	.09	2.28	1/2	12.7	.71	18.03	.97	24.64	.92	23.37	.50	12.7
769L _ 3/16 X 1/8	3/16	4.76	1/8	.12	3.04	1/2	12.7	.74	18.80	1.00	25.40	.74	18.80	.54	13.7
769L _ 3/16 X 1/4	3/16	4.76	1/4	.12	3.04	1/2	12.7	.74	18.80	1.00	25.40	.92	23.37	.54	13.7
769L _ 1/4 X 1/8	1/4	6.35	1/8	.19	4.82	1/2	12.7	.77	19.56	1.06	26.92	.74	18.80	.60	15.2
769L _ 1/4 X 1/4	1/4	6.35	1/4	.19	4.82	1/2	12.7	.77	19.56	1.06	26.92	.92	23.37	.60	15.2
769L _ 1/4 X 3/8	1/4	6.35	3/8	.19	4.82	11/16	17.5	.88	22.35	1.17	29.71	1.03	26.16	.60	15.2
769L _ 1/4 X 1/2	1/4	6.35	1/2	.19	4.82	13/16	20.6	.96	24.38	1.25	31.75	1.30	33.02	.60	15.2
769L _ 5/16 X 1/8	5/16	7.93	1/8	.19	4.82	9/16	14.3	.84	21.34	1.13	28.70	.78	45.21	.64	16.2
769L _ 5/16 X 1/4	5/16	7.93	1/4	.25	6.35	9/16	14.3	.84	21.34	1.13	28.70	.96	49.78	.64	16.2
769L _ 5/16 X 3/8	5/16	7.93	3/8	.25	6.35	11/16	17.5	.91	23.11	1.20	30.48	1.03	26.16	.64	16.2
769L _ 3/8 X 1/8	3/8	9.52	1/8	.19	4.82	5/8	15.9	.91	23.11	1.20	30.48	.82	20.83	.66	14.8
769L _ 3/8 X 1/4	3/8	9.52	1/4	.28	7.11	5/8	15.9	.91	23.11	1.20	30.48	1.00	25.40	.66	14.8
769L _ 3/8 X 3/8	3/8	9.52	3/8	.28	7.11	11/16	17.5	.94	23.87	1.23	31.24	1.03	26.16	.66	14.8
769L _ 3/8 X 1/2	3/8	9.52	1/2	.28	7.11	13/16	20.6	1.02	25.90	1.31	33.28	1.30	33.02	.66	14.8
769L _ 3/8 X 3/4	3/8	9.52	3/4	.28	7.11	1-1/8	28.6	1.17	29.71	1.46	37.08	1.45	36.83	.66	14.8
769L _ 1/2 X 1/4	1/2	12.70	1/4	.28	7.11	13/16	20.6	1.02	25.90	1.42	36.07	1.11	28.19	.90	22.9
769L _ 1/2 X 3/8	1/2	12.70	3/8	.38	9.65	13/16	20.6	1.02	25.90	1.42	36.07	1.11	28.19	.90	22.9
769L _ 1/2 X 1/2	1/2	12.70	1/2	.41	10.41	13/16	20.6	1.02	25.90	1.42	36.07	1.30	33.02	.90	22.9
769L _ 1/2 X 3/4	1/2	12.70	3/4	.41	10.41	1 1/8	28.6	1.17	29.71	1.57	39.88	1.45	36.83	.90	22.9
769L _ 5/8 X 3/8	5/8	15.87	3/8	.38	9.61	15/16	23.8	1.10	27.94	1.50	38.10	1.19	30.23	.96	24.4
769L _ 5/8 X 1/2	5/8	15.87	1/2	.47	11.94	15/16	23.8	1.10	27.94	1.50	38.10	1.38	35.05	.96	24.4
769L _ 5/8 X 3/4	5/8	15.87	3/4	.50	12.70	1 1/8	28.6	1.17	29.71	1.57	39.88	1.45	36.83	.96	24.4
769L _ 3/4 X 1/2	3/4	19.05	1/2	.47	11.94	1 1/8	28.6	1.17	29.71	1.57	39.88	1.45	36.83	.96	24.4
769L _ 3/4 X 3/4	3/4	19.05	3/4	.62	15.74	1 1/8	28.6	1.17	29.71	1.57	39.88	1.45	36.83	.96	24.4
769L _ 7/8 X 3/4	7/8	22.22	3/4	.62	15.74	1 3/8	34.9	1.36	34.54	1.76	44.70	1.64	41.66	1.02	25.9
769L _ 1 X 3/4	1	25.40	3/4	.62	15.74	1 3/8	34.9	1.45	36.83	1.93	49.02	1.64	41.66	1.23	31.2
769L _ 1 X 1	1	25.40	1	.88	22.35	1 3/8	34.9	1.45	36.83	1.93	49.02	1.83	46.48	1.23	31.2
769L _ 1 1/4 X 1 1/4	1 1/4	31.75	1 1/4	1.09	27.7	1 11/16	42.9	1.75	44.45	2.62	66.50	1.88	47.75	1.62	41.1
769L _ 1 1/2 X 1 1/2	1 1/2	38.1	1 1/2	1.34	34.0	2	50.8	2.00	50.80	3.07	78.00	2.38	60.45	1.97	50.0

● "D" - Minimum çap uzunluğunu gösterir. ● Boyutlar sadece bilgilendirme içindir, önceden haber vermeden değiştirilebilir.